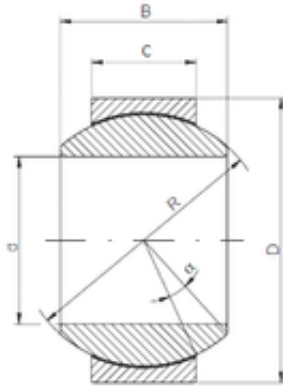




# NTN DRIVESHAFT ANDERSON, INC.

280 mm x 430 mm x 210 mm ISO GE 280  
HCR-2RS plain bearings



Bearing No. GE 280 HCR-2RS

Size	280x430x210 mm
Bore Diameter	280 mm
Outer Diameter	430 mm
Width	210 mm
d	280 mm
D	430 mm
B	210 mm
C	120 mm
R	375 mm
Angle	15 °

GE 280 HCR-2RS Bearing 2D drawings and 3D CAD models