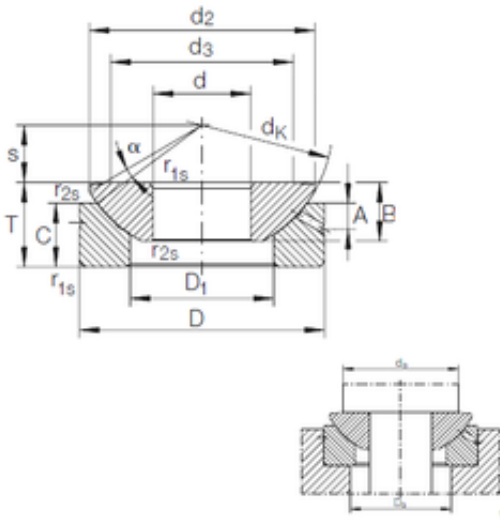




# NTN DRIVESHAFT ANDERSON, INC.

40 mm x 105 mm x 27 mm INA GE 40 AX plain bearings

Bearing No. GE 40 AX



GE 40 AX Bearing 2D drawings and 3D CAD models

Size	40x105x32 mm
Bore Diameter	40 mm
Outer Diameter	105 mm
Width	32 mm
d	40 mm
D	105 mm
T	32 mm
B	27 mm
C	22 mm
d2	98 mm
d3	78 mm
dk	114 mm
r1 min.	1 mm
r2 min.	0,3 mm
A	9 mm
D1	59 mm
S	24,5 mm
da max	78 mm
Da min	64 mm
Angle	6 °
Weight	1,7 Kg
Basic dynamic load rating (C)	373 kN