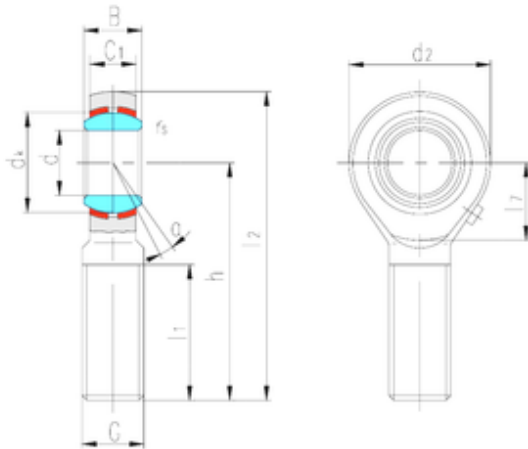




NTN DRIVESHAFT ANDERSON, INC.



LS SABP20S plain bearings

Bearing No. SABP20S

Bore Diameter	20 mm
d	20 mm
B	25 mm
d2	46 mm
dk	34,93 mm
h	78 mm
l1 min.	47 mm
l2 max.	101 mm
l7 min.	25 mm
r min.	0,6 mm
C1	18 mm
Thread (G)	M20 × 1,5
Angle	15 °
Weight	0,382 Kg
Basic dynamic load rating (C)	31 kN

SABP20S Bearing 2D drawings and 3D CAD models