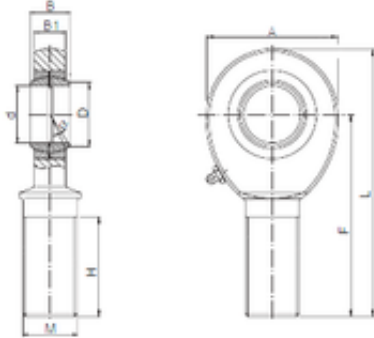




## NTN DRIVESHAFT ANDERSON, INC.

16 mm x 19,3 mm x 21 mm ISO SAL 16 plain bearings



Bearing No. SAL 16

Bore Diameter	16 mm
d	16 mm
B	21 mm
A	42 mm
B1	15 mm
D	19,3 mm
F	66 mm
H	40 mm
L	87 mm
Bolt (G)	M16

SAL 16 Bearing 2D drawings and 3D CAD models