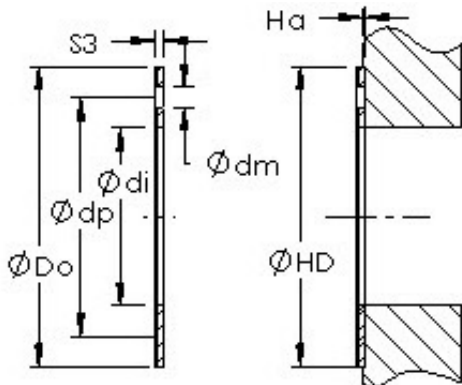




NTN DRIVESHAFT ANDERSON, INC.



AST AST20 WC12 plain bearings

Bearing No. AST20 WC12

Bore Diameter	10 mm
Outer Diameter	24 mm
Bearing Type	thrust washer
Shaft Dia., Nominal (d)	10.0000
Bearing Outside Diameter, Nominal (Do)	24.000
Washer Inside Diameter, Nominal (di)	12
Washer Inside Diameter Tolerance (di tol.) - +0.25 / -0	+0.25 / 0
Washer Outside Diameter, Nominal (Do)	24
Washer Outside Diameter Tolerance (Do tol.) - +0 / -0.25	+0 / 0.25
Washer Thickness, Nominal (S3)	2
Washer Thickness Tolerance (S3 tol.) - +0 / -0.05	+0 / 0.05
Mounting Hole Dia. (dm)	1.500
Mounting Hole Pitch Dia. (dp)	18
Housing Counterbore Depth (Ha)	1.00
Housing Counterbore Depth Tolerance (Ha tol.) - +0.2 / -0.2	+0.2 / 0.2
Housing Counterbore Diameter, Nominal (HD)	24.000

AST20 WC12 Bearing 2D drawings and 3D CAD models



NTN DRIVESHAFT ANDERSON, INC.

Housing Counterbore Diameter Tolerance (HD tol.)	+0.12 / 0
Material	Carbon steel shell with POM plastic liner