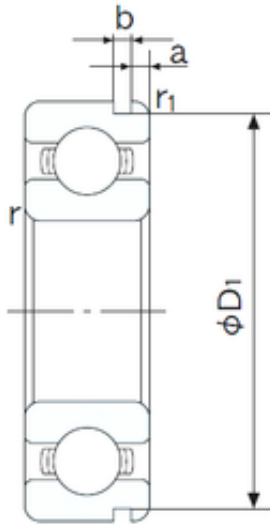




# NTN DRIVESHAFT ANDERSON, INC.



120 mm x 180 mm x 28 mm NACHI 6024N  
deep groove ball bearings

Bearing No. 6024N

6024N Bearing 2D drawings and 3D CAD models

|                               |                  |
|-------------------------------|------------------|
| Size                          | 120x180x28 mm    |
| Bore Diameter                 | 120 mm           |
| Outer Diameter                | 180 mm           |
| Width                         | 28 mm            |
| d                             | 120 mm           |
| D                             | 180 mm           |
| B                             | 28 mm            |
| C                             | 28 mm            |
| a                             | 3.71 mm          |
| b                             | 3.5 mm           |
| r min.                        | 2 mm             |
| r1 min.                       | 0.5 mm           |
| D1                            | 173.66 mm        |
| Weight                        | 2.36 Kg          |
| Basic dynamic load rating (C) | 88 kN            |
| Basic static load rating (C0) | 79,5 kN          |
| (Grease) Lubrication Speed    | 3500 r/min       |
| Bore Type                     | Cylindrical Bore |
| Enclosure                     | Open             |
| Configuration                 | Single Row       |
| Bore Size                     | 120 mm           |
| Outside Diameter              | 180 mm           |
| Width                         | 28 mm            |
| Fillet Radius/Chamfer         | 2 mm             |
| r1                            | 0.5 mm           |



## NTN DRIVESHAFT ANDERSON, INC.

|                         |                   |
|-------------------------|-------------------|
| Groove Width            | 3.5 mm            |
| Groove Diameter         | 173.7 mm          |
| a (max)                 | 3.7 mm            |
| Dynamic Load Rating     | 88,000 N          |
| Static Load Rating      | 79,500 N          |
| Limiting Speed - Grease | 3,600 rpm         |
| Limiting Speed - Oil    | 4,300 rpm         |
| Factor fo               | 15.7              |
| Radial Clearance        | 0.015 to 0.041 mm |
| da (min)                | 128 mm            |
| Da (max)                | 172 mm            |
| Dx (min)                | 195 mm            |
| ra (max)                | 2 mm              |
| Cy (max)                | 6.4 mm            |