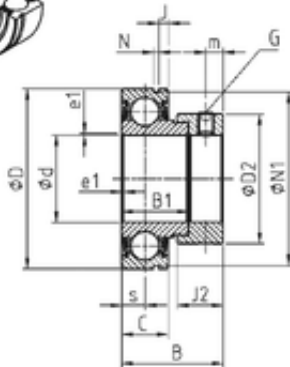




NTN DRIVESHAFT ANDERSON, INC.



36,5125 mm x 72 mm x 38,9 mm SNR
CES207-23 deep groove ball bearings

Bearing No. CES207-23

Size	36.5125x72x38.9 mm
Bore Diameter	36,5125 mm
Outer Diameter	72 mm
Width	38,9 mm
d	36,5125 mm
D	72 mm
B	38,9 mm
B1	25,4 mm
C	17 mm
e	1,5 mm
a	3,96875 mm
m	6,5 mm
s	8,5 mm
D2	55,6 mm
J	3,18 mm
N	1,9 mm
N1	68,81 mm
Thread (G) - 5/16-24UNF	5/1624UNF
J2	17,5 mm
Weight	0,48 Kg
Basic dynamic load rating (C)	25,7 kN
b	1.9 mm
B2	17.5 mm
d1	55.6 mm
G	5/16-24UNF

CES207-23 Bearing 2D drawings and 3D CAD models



NTN DRIVESHAFT ANDERSON, INC.

r	1.5
S	8.5 mm
SW	3.97 mm
C0	15.2 kN
T min.	-20 ° C
T max.	100 ° C
Recommended tightening torque for set screw	8 Nm