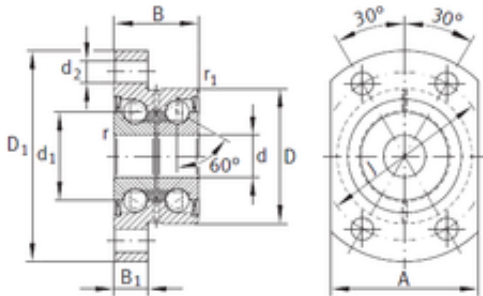




NTN DRIVESHAFT ANDERSON, INC.

12 mm x 42 mm x 25 mm INA ZKLFA1263-2RS angular contact ball bearings



Bearing No. ZKLFA1263-2RS

ZKLFA1263-2RS Bearing 2D drawings and 3D CAD models

Size	12x42x25 mm
Bore Diameter	12 mm
Outer Diameter	42 mm
Width	25 mm
d	12 mm
D	42 mm
B	25 mm
C	25 mm
Screw	M6
Angle (?)	60 °
d1	25 mm
d2	6,8 mm
r min.	0,3 mm
r1 min.	0,6 mm
A	45 mm
B2	10 mm
D1	63 mm
J	53 mm
da min.	16 mm
da max	31 mm
Weight	0,3 Kg
Dynamic load rating axial (C)	16,9 kN
Static load rating axial (C0)	24,7 kN
Category	Angular Contact Ball Bearings



NTN DRIVESHAFT ANDERSON, INC.

Inventory	0.0
Manufacturer Name	SCHAEFFLER GROUP
Minimum Buy Quantity	N/A
Weight / Kilogram	0.359
EAN	4012802078886
Product Group	B00270
Enclosure	2 Seals
Flush Ground	No
Rolling Element	Ball Bearing
Number of Rows of Balls	Double Row
Precision Class	ABEC 1 ISO P0
Maximum Capacity / Filling Slot	No
Snap Ring	Yes
Cage Material	Plastic
Contact Angle	60 Degree
Internal Clearance	C0-Medium
Number of Bearings	1 (Single)
Inch - Metric	Metric
Long Description	12MM Bore; 42MM Outside Diameter; 25MM Width; 2 Seals; No Flush Ground; Ball Bearing; Double Row of Balls; ABEC 1 ISO P0; No Filling Slot; Yes Snap Ring; C0-Medium; Plastic Cage; 60 Degree; 1 (Singl
Other Features	With Fixing Holes With Snap Ring Groove
Category	Angular Contact Ball Bearing
UNSPSC	31171531
Harmonized Tariff Code	8482.10.50.28
Noun	Bearing
Keyword String	Angular Contact



NTN DRIVESHAFT ANDERSON, INC.

Manufacturer URL	http://www.ina.com
Weight / LBS	0.66139
Outside Diameter	1.654 Inch 42 Millimeter
Width	0.984 Inch 25 Millimeter
Bore	0.472 Inch 12 Millimeter